

# **5-eSeries**

## **SERVICE AND WEAR KIT INSTRUCTIONS**

**RAVO bv**

**Subsidiary of Groupe FAYAT SA**

**Postbus 286, 1800 AG Alkmaar**

**The Netherlands**

**Tel: +31 (0) 72 5673232**

**Fax: +31 (0) 72 5673200**

**[HTTP://WWW.RAVO-FAYAT.COM](http://www.ravo-fayat.com)**

**REVISION 001**

## **FOREWORD**

This manual provides the technician with information necessary to perform the specific tasks as indicated in the service kits. Although RAVO bv has made every effort to ensure the accuracy of the information in this manual, no rights can be derived from the content.

The information contained in this manual is protected by copyright. All rights reserved.

No part of this manual may be reproduced and/or published by print, photocopy or any other means without prior written permission from RAVO bv.

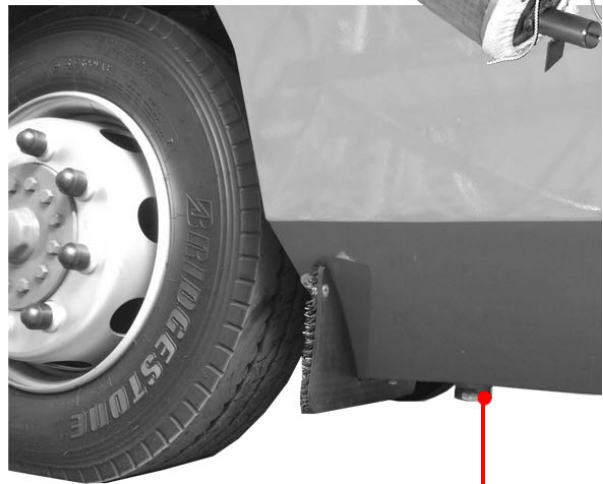
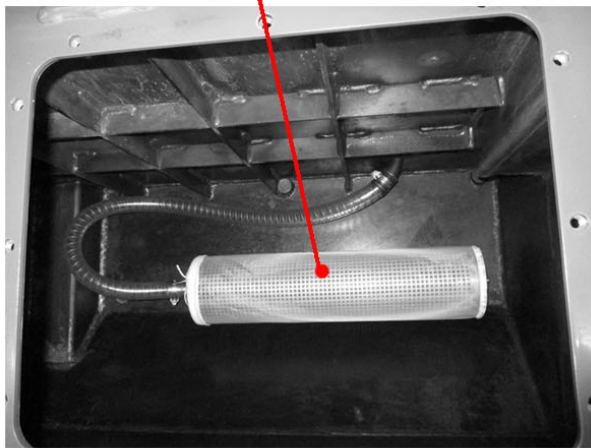
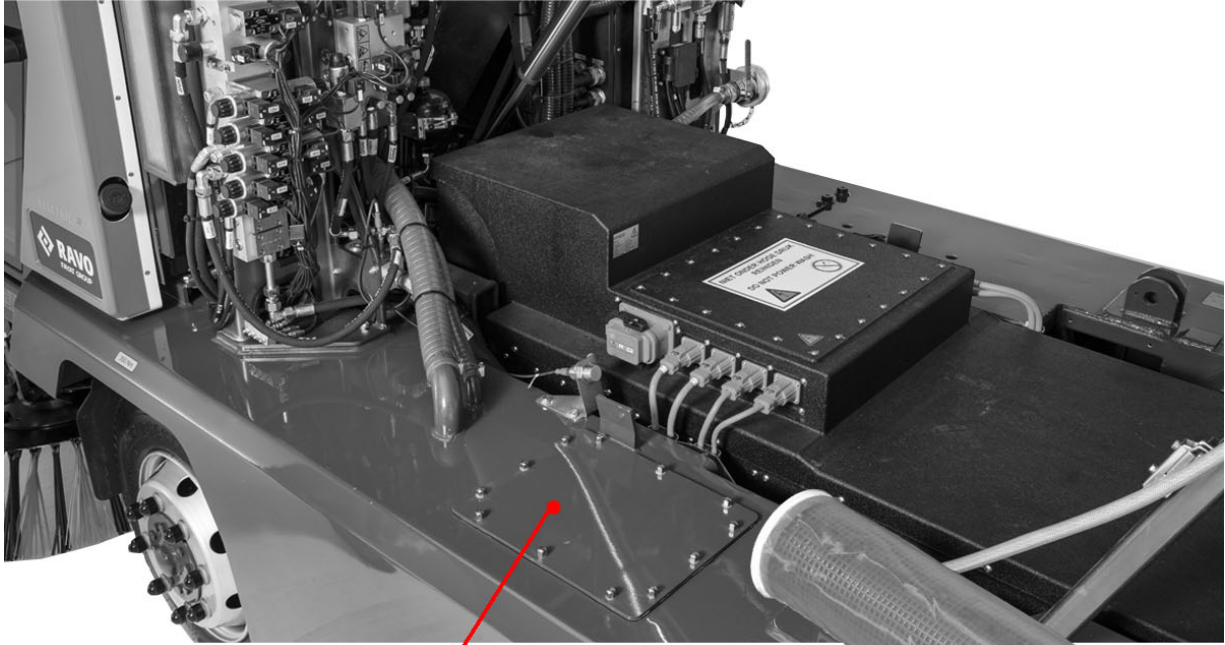
**DOCUMENT NUMBER:RAV5002165**

**VERSION:REV.001**

| REV. NO. | DESCRIPTION       | IMPLEMENTATION DATE |   |
|----------|-------------------|---------------------|---|
| 001      | Kit content added |                     | - |
|          |                   |                     |   |
|          |                   |                     |   |

|   |           |
|---|-----------|
| <b>WATER TANK</b> .....                   | <b>4</b>  |
| <b>POLLEN FILTER</b> .....                | <b>6</b>  |
| <b>FILTERS</b> .....                      | <b>8</b>  |
| <b>DIFFERENTIAL OIL REPLACEMENT</b> ..... | <b>12</b> |
| <b>SUCTION-NOZZLE RUBBERS</b> .....       | <b>14</b> |
| <b>SERVICE KITS CONTENT</b> .....         | <b>16</b> |

A. 1 WATER TANK



The spraywater pre-filter (1) must be kept clean if the sweeper's spray nozzles are to work correctly. This will prevent blockages in the spraywater system.

The spraywater pre-filter must be cleaned or replaced and the water tank must be flushed every 100 hours service, B service, C service and D service.

### A. 1.1 Draining the water

- Position the sweeper with the right-front wheel above a floor drain.
- Tip the container.
- Fit the safety supports under the container.
- Turn off the sweeper and remove the key.
- Remove the water tank cover (1).
- Remove the drain plug (3) behind the right-front wheel and let all the water drain from the water tank.

### A. 1.2 Flushing the water tank and spraywater pre-filter

- Remove the water tank covers (1) and the seals.
- Loosen the hose clamp and remove the hose from the spraywater pre-filter (2). Remove the spraywater pre-filter (2).
- Check the spraywater pre-filter (2) for contamination. Clean or replace the spraywater pre-filter element.
- Check both water tanks for contamination. If necessary, flush the water tank with lots of water.

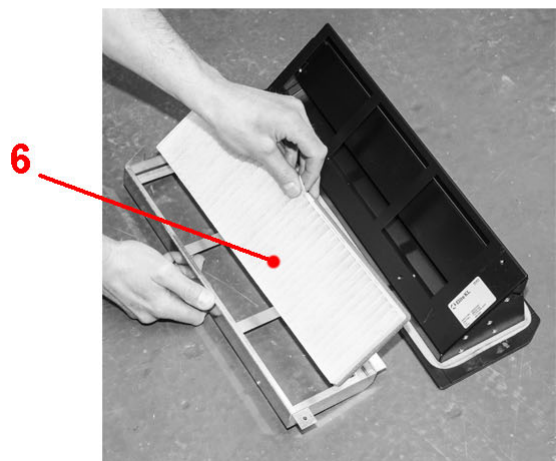
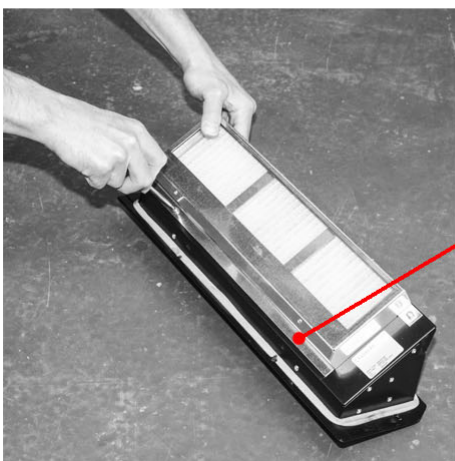
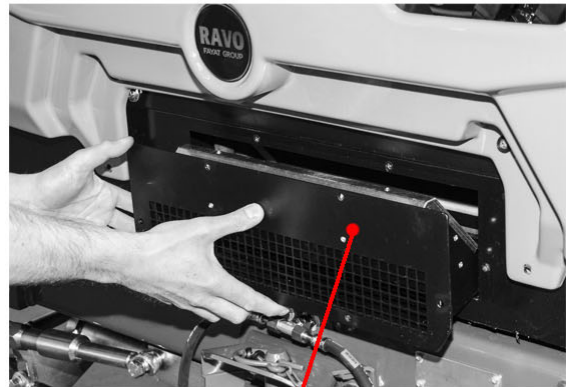
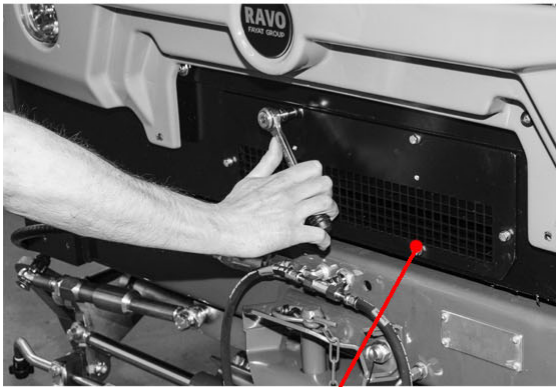
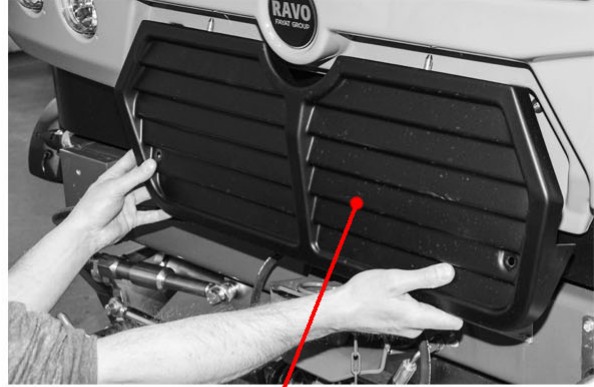


#### **CAUTION!**

**FLUSH THE WATER TANK WITH LOTS OF WATER. DO NOT USE BRUSHES OR CHEMICAL CLEANSERS BECAUSE THEY MAY DAMAGE THE WALLS OF THE WATER TANK.**

- Fit the spraywater pre-filter (2) in the water tank.
- Connect the hose to the spraywater pre-filter (2) and tighten the hose clamp.
- Install the water tank cover (1).

A. 2 POLLEN FILTER



The pollen filter is located on the front of the cab.

Check the pollen filter every B service, C service and D service.



**NOTE:**

**REGULAR REPLACEMENT OF THE POLLEN FILTER IS NECESSARY TO MAINTAIN A HEALTHY, DUST-FREE ENVIRONMENT IN THE CAB. IF THE SWEEPER IS USED IN DUSTY AREAS, REPLACE THE POLLEN FILTER EVERY 250 RUNNING HOURS.**

### **A. 2.1 Replacing the pollen filter**

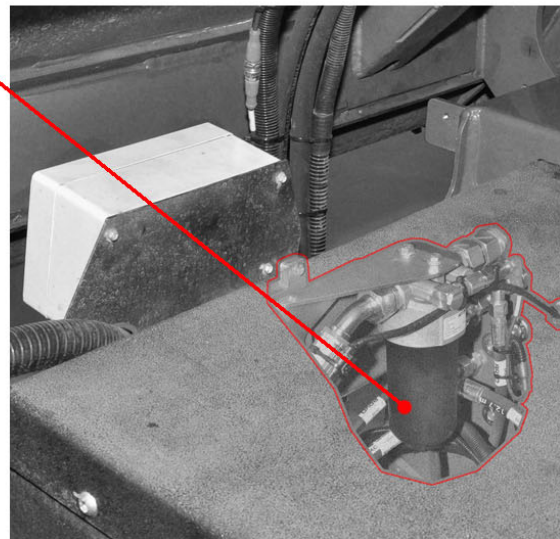
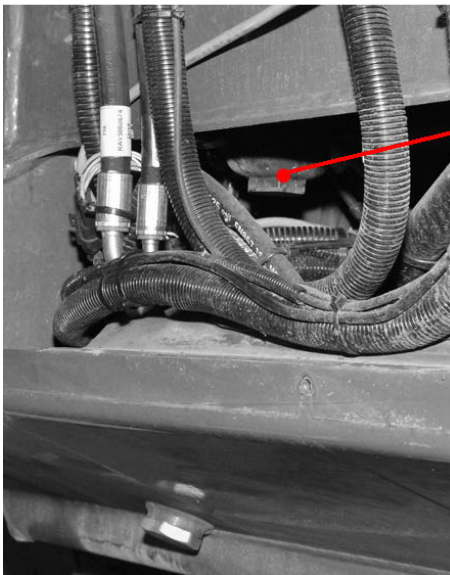
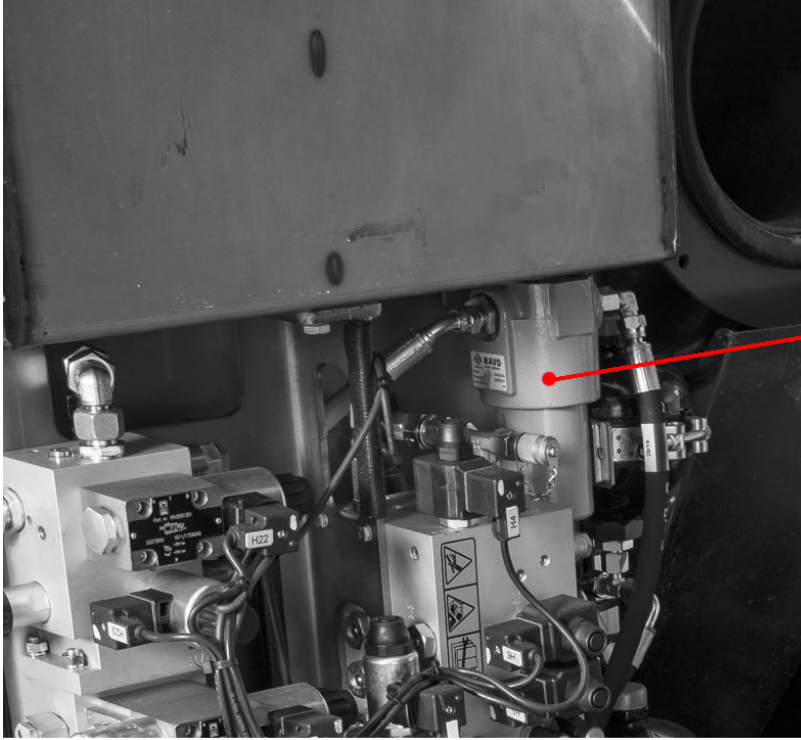
- Turn off the sweeper and remove the key.
- Remove the 2 screws from the cover plate (1) and remove the cover-plate (2).
- Remove the 4 bolts from the labyrinth plate (3) and remove the labyrinth plate (4).
- Remove the 4 screws from pollen filter cover (5) and remove the cover (5).
- Remove the pollen filter from the cover (6)
- Fit the new pollen filter (6).
- Fit the filter and filter cover (5) with the 4 screws
- Fit the labyrinth plate (3 and 4) with the 4 bolts.
- Fit the cover plate (1 and 2).



**CAUTION!**

**OBSERVE THE RELEVANT ENVIRONMENTAL REGULATIONS WHEN CLEANING UP OIL, FUEL, COOLANT, BRAKE FLUID, FILTERS AND BATTERIES.**

A. 3 FILTERS





Replace the return filter at each C SERVICE.



**NOTE:**

**MAKE SURE THAT THE AREA AROUND THE OIL FILTER IS THOROUGHLY CLEAN**

The pressure filter of the braking/steering/suspension system (1) is located behind the cabin on the left-hand side.

Replace the pressure filter (1) at each 100 hours service and D service.



**NOTE:**

**MAKE SURE THAT THE AREA AROUND THE OIL FILTER IS THOROUGHLY CLEAN**

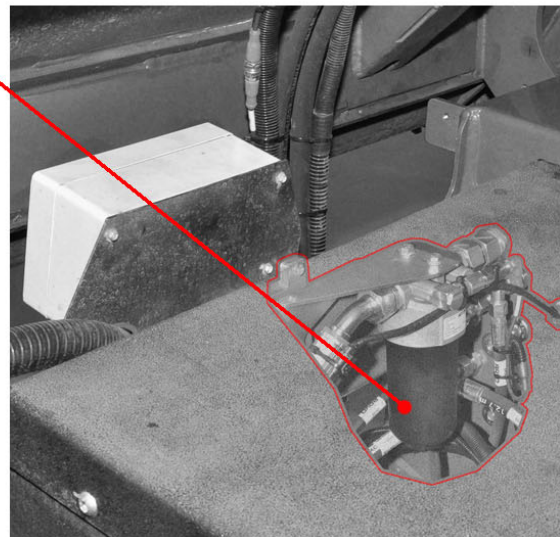
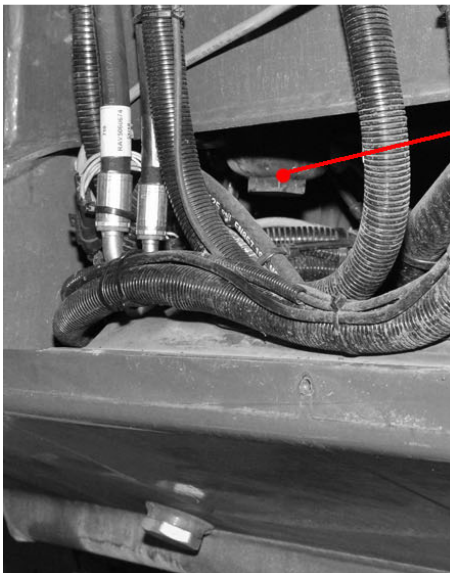
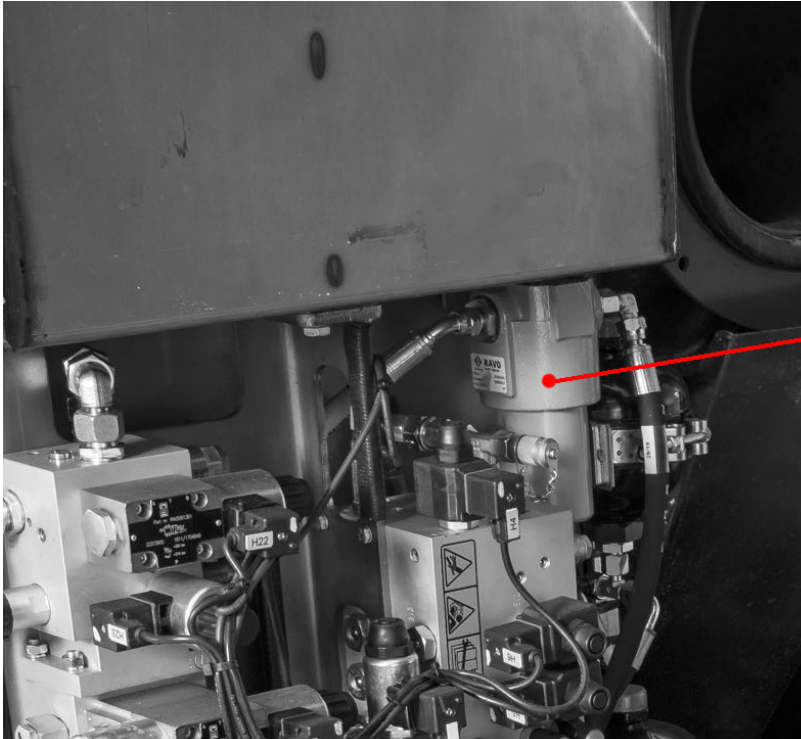
### **A. 3.1 Replacing the pressure filter of the braking/steering/suspension system**

- If possible, park the sweeper above a garage pit on a flat horizontal floor or place it on a vehicle lift.
- Tilt the container.
- Stop the sweeper and remove the key.
- Fit the safety supports under the container.
- Place a catch tray under the pressure filter (1).
- Unscrew the pressure filter (1) using a SW24 spanner. Clean the contact surfaces.
- Replace the filter.
- Fit the new filter in the holder, and screw it hand-tight, making sure that a good seal is obtained.



**CAUTION!**

**ALWAYS COMPLY WITH THE RELEVANT ENVIRONMENTAL-PROTECTION MEASURES WHEN CLEARING UP OIL, FUEL, COOLANT, BRAKE FLUID, FILTERS AND BATTERIES.**



The return filter of the hydraulic system (2) is located in the left rear of the drive line compartment.

Replace the return filter at each 100 hours service and D service.



**NOTE:**

**MAKE SURE THAT THE AREA AROUND THE OIL FILTER IS THOROUGHLY CLEAN**

### **A. 3.2 Replacing the return filter of the hydraulic system.**

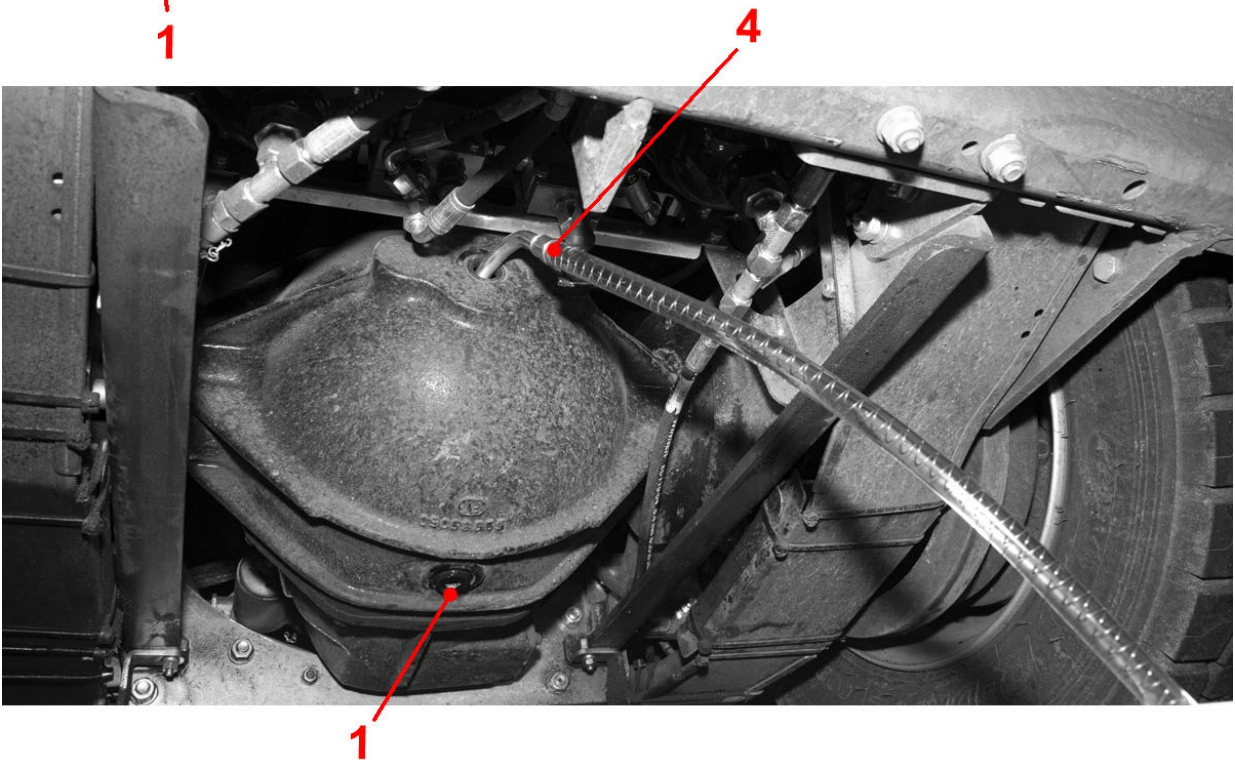
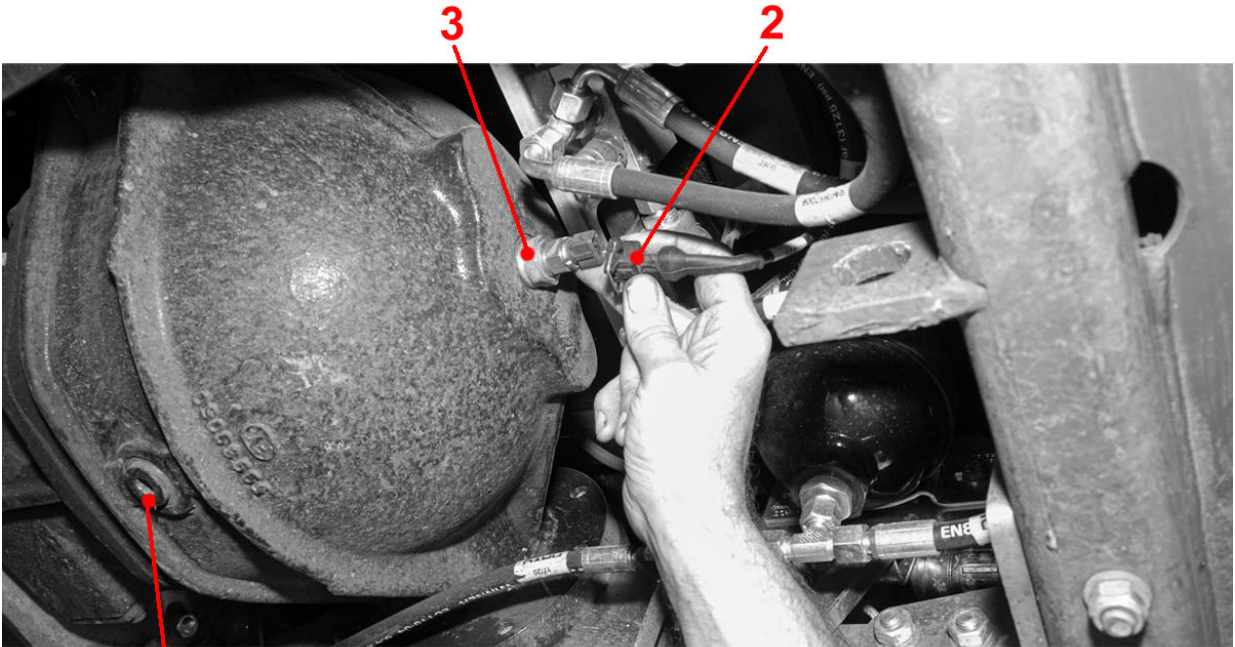
- If possible, park the sweeper above a garage pit on a flat horizontal floor or place it on a vehicle lift.
- Tilt the container.
- Stop the sweeper and remove the key.
- Fit the safety supports under the container.
- Place a catch tray under the return filter (2).
- Unscrew the return filter (2) using a filter tool. Clean the contact surfaces.
- Replace the filter.
- Fit the new return filter and screw it hand-tight, making sure that a good seal is obtained.



**CAUTION!**

**ALWAYS COMPLY WITH THE RELEVANT ENVIRONMENTAL-PROTECTION MEASURES WHEN CLEARING UP OIL, FUEL, COOLANT, BRAKE FLUID, FILTERS AND BATTERIES.**

A. 4 DIFFERENTIAL OIL REPLACEMENT



Replace the oil of the differential at each 100 hours service, C service and D service.



**NOTE:**

**MAKE SURE THAT THE AREA AROUND THE DIFFERENTIAL IS THOROUGHLY CLEAN**



**CAUTION:**

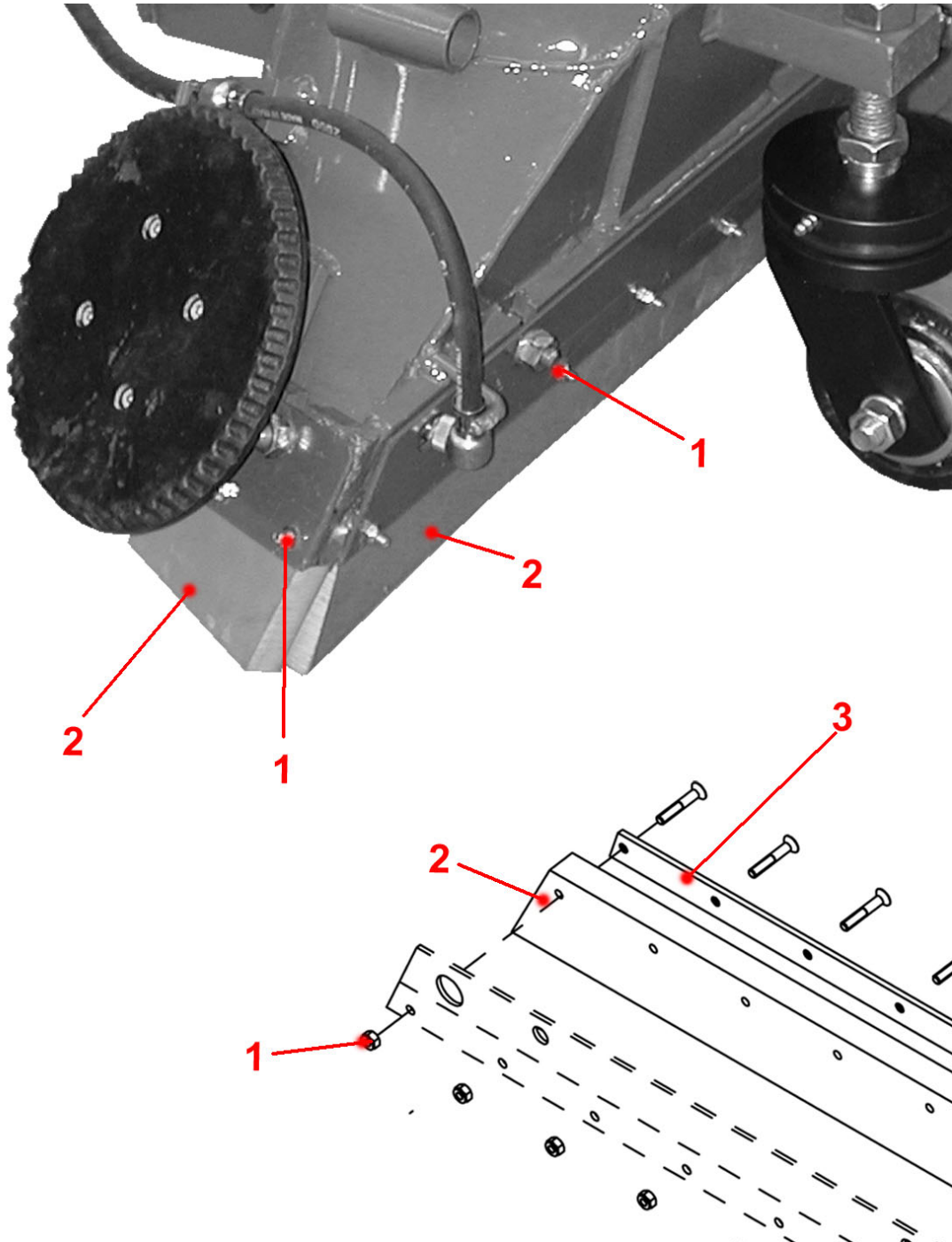
**CONSIDER THE ENVIRONMENT. CLEAN SPILT OIL IMMEDIATELY. PLACE A CLOTH OR RAG THAT HAS OIL ON IT IN THE CHEMICAL WASTE CONTAINER. ALSO PLACE OTHER WASTE PRODUCTS THAT HAVE OIL IN THEM (E.G. CANS, PLASTIC BOTTLES, ETC.) IN THE CHEMICAL WASTE CONTAINER.**

The differential is located at the rear of the sweeper between the rear wheel tyres.

### **A. 4.1 Replacing the differential oil**

- If possible, park the sweeper above a garage pit on a flat horizontal floor or place it on a vehicle lift.
- Stop the sweeper and remove the key.
- Place a catch tray under the differential (1).
- Remove the cable (2) from the temperature sensor (3).
- Remove the temperature sensor (3) from the differential.
- Remove the plug (1) from the differential and drain the oil from the differential.
- Install the plug (1).
- Fill the differential true the temperature sensor hole (4) with the differential synthetic gear oil (API GL-5 EP SAE 75W-140), 7 litres.
- Install the temperature sensor (3) and the cable (2).

A. 5 SUCTION-NOZZLE RUBBERS



The suction-nozzle rubbers, which are located on the bottom of the suction nozzle, must be checked regularly for wear.

The suction nozzle can be checked daily, during cleaning. If the suction-nozzle rubbers are too worn, they must be replaced.



**NOTE:**

**THE HEIGHT OF THE SUCTION-NOZZLE RUBBERS MAY NOT BE LESS THAN 2 CM IN THE CENTRE OF THE SUCTION NOZZLE, MEASURED FROM THE METAL STRIP. IF THE HEIGHT IS LESS THAN 2 CM, THEY MUST BE REPLACED.**

### **A. 5.1 Replacing the suction-nozzle rubbers**

- Preferably place the sweeper above an inspection pit or on a car lift.
- Turn off the sweeper and remove the key.
- Remove the bolts and nuts (1) on the bottom of the sweeper.
- Remove the strips (3) and the suction-nozzle rubbers (2).
- Fit the new suction-nozzle rubbers (2) and the strips (3) with the bolts and nuts (1).




**NOTE:**

**THE SUCTION-NOZZLE RUBBERS MUST FIT TOGETHER CLOSELY.**


- Adjust the complete suction nozzle again.

**A. 6 SERVICE KITS CONTENT**

|   | DESCRIPTION   | PART NUMBERS   |
|---|---|--|
|  | <p><b>SERVICE KIT 100 HOURS (incl. diff oil).</b></p> <p><b>Contains:</b><br/>           Hydraulic oil filter brake / front suspension system<br/>           Hydraulic oil filter return<br/>           Differential Oil 7.5 L Eseries<br/>           Waterless coolant for cabin heating, 5ltr</p> | <p><b>RAV5750100</b></p> <p>RAV5060047 x 1<br/>           RAV5068082 x 1<br/>           RAV5068085 x 1<br/>           RAV5198156 x 1</p> |

**NOTE:**

**THE WATERLESS COOLANT IS ADDED IN THIS 100 HOURS SERVICE KIT TO BE PLACED IN YOUR STOCK OR TO BE USED TO TOP-UP THE COOLANT IN THE HEATING SYSTEM. DO NOT USE WATER BASED OR ANY OTHER COOLANT TO TOP-UP THE HEATING SYSTEM.**

|   | DESCRIPTION   | PART NUMBERS   |
|---|---|--|
|  | <p><b>SERVICE KIT B TO D ESERIES INCL.DIFF.OIL</b></p> <p><b>Contains:</b><br/>           Differential Oil 7.5 L Eseries<br/>           Water filter cloth<br/>           Cabin air filter<br/>           Hydraulic oil filter brake / front suspension system<br/>           Hydraulic oil filter return</p> | <p><b>RAV5750101</b></p> <p>RAV5068085 x 2<br/>           RAV5180330 x 4<br/>           RAV5031550 x 4<br/>           RAV5060047 x 1<br/>           RAV5068082 x 1</p> |

|  | DESCRIPTION  | PART NUMBERS   |
|--|--|--|
|  | <p><b>SERVICE KIT RAV5750101 - PARTS FOR B SERVICE</b></p> <p><b>Contains:</b><br/>           Water filter cloth<br/>           Cabin air filter</p> | <p><b>RAV5750101</b></p> <p>RAV5180330 x 1<br/>           RAV5031550 x 1</p> |

|   | DESCRIPTION  | PART NUMBERS   |
|---|--|--|
|  | <p><b>SERVICE KIT RAV5750101 - PARTS FOR C SERVICE</b></p> <p><b>Contains:</b><br/>           Differential Oil 7.5 L Eseries<br/>           Water filter cloth<br/>           Cabin air filter</p> | <p><b>RAV5750101</b></p> <p>RAV5068085 x 1<br/>           RAV5180330 x 1<br/>           RAV5031550 x 1</p> |

|   | DESCRIPTION  | PART NUMBERS   |
|---|--|--|
|  | <p><b>SERVICE KIT RAV5750101 - PARTS FOR B SERVICE</b></p> <p><b>Contains:</b><br/>           Water filter cloth<br/>           Cabin air filter</p> | <p><b>RAV5750101</b></p> <p>RAV5180330 x 1<br/>           RAV5031550 x 1</p> |

|   | DESCRIPTION   | PART NUMBERS   |
|---|---|--|
|  | <p><b>SERVICE KIT RAV5750101 - PARTS FOR D SERVICE</b></p> <p><b>Contains:</b><br/>           Differential Oil 7.5 L Eseries<br/>           Water filter cloth<br/>           Cabin air filter<br/>           Hydraulic oil filter brake / front suspension system<br/>           Hydraulic oil filter return</p> | <p><b>RAV5750101</b></p> <p>RAV5068085 x 1<br/>           RAV5180330 x 1<br/>           RAV5031550 x 1<br/>           RAV5060047 x 1<br/>           RAV5068082 x 1</p> |